



WHAT DO
YOU HAVE
TO SAY?

HP Designjet 130 Printer series



Printers for creative professionals—the affordable HP Designjet 130 multi-format printing systems create fade-resistant, photo-quality images with consistent colors for professional photos, prints and proofs.

Color images that last

- **Fade-resistant, photo-quality images.** Proprietary dye-based HP Vivera inks are carefully engineered to work flawlessly with all parts of the printing systems so you achieve rich, vibrant color and extraordinary photo image quality with exceptional fade-resistance.¹ Graphic designers and professional photographers can rest assured that the images they create will maintain their impact.
- **Rich color depth and minimal dot visibility.** The six-color HP writing system delivers a wide range of colors, deeper blacks, continuous tones and superior gloss uniformity. A four picoliter ink drop size maintains fine detail reproductions, especially in dark areas, and smooth tonal transitions.

Reliable color

- **See reliable, consistent color from print to print.** The HP Designjet 130 Printer series features automatic closed-loop color calibration to provide consistent color, print to print and printer to printer.
- **Full color workflow support.** Optimized Macintosh and Windows® drivers provide key features for creative professionals, including RGB ICC profiles and full Apple ColorSync support. Optional Adobe® PostScript® 3™ software RIP provides robust color management and proofing options for the CMYK workflow.
- **Making professional color results simpler.** HP's free on-line knowledge center provides illustrated step-by-step instructions specific to your application, computer and workflow. And HP's custom color profiling service provides high-quality ICC media profiles for professionals whose work demands superior color accuracy.

Postcards to posters

- **Ideas big and small—no more cutting and pasting.** The standard tray holds up to 70 sheets as small as a postcard or as big as a poster (457 x 610 mm/18 x 24 in). Extra-wide front and rear paths allow oversize output up to 625 x 1625 mm (24 x 64 in); standard roll feed supports printing up to 610 mm x 15 m (24 in x 50 ft) and allows you to switch between loaded media options without intervention.
- **Media that shows off your ideas.** The HP Designjet 130 Printer series can handle media weights up to 300 g/m² (80 lb), as well as thick or rigid media up to 15 mil. Choose from a variety of media finishes, including gloss, satin and matte.

Time to design

- **See reliable, consistent color from print to print.** Print at speeds up to 4 minutes per page (mpp) for A3 (B) size and up to 12 mpp for an A1 (D) size color image in Normal mode, with fast color stability. Proofs and prints can be reviewed and approved in real time.
- **More time creating.** In-house printing for oversize output eliminates delays and shortens project timelines. Reliable, modular HP ink cartridges and printheads require minimal user intervention—further enhancing cost-effectiveness and efficiency.

¹ Wilhelm Imaging Research, Inc. concluded that prints made with HP No. 85 ink cartridges and HP Premium Plus Photo papers may be displayed indoors under glass for 82 years before noticeable fading and staining occur. (see www.wilhelm-research.com for details).

As a creative professional, you need more than reliability, performance and value. Your world is all about color. That's why HP has implemented technologies and solutions that deliver the color quality, consistency and control you need for a superior color experience.

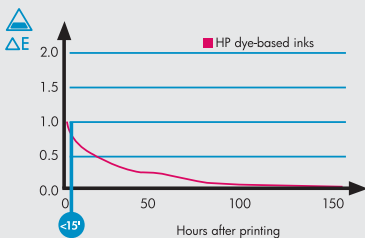
Color technology by HP

Inks and media deliver fade resistance and stability

New, dye-based inks, combined together with HP papers, produce images that stabilize in minutes vs. hours and last for years. HP inks, media and printers are designed together for results that do justice to your ideas.

HP Designjet 130 Printer series

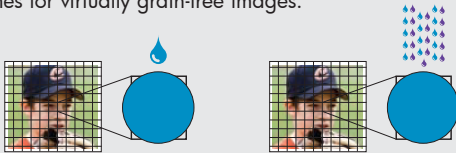
(using HP Proofing Semi-gloss Paper)



HP color layering technology

Like artists creating new colors by mixing the standard paints on their palettes, multi-layering technology uses the basic CMYKcm palette to achieve a much broader range of printable colors.

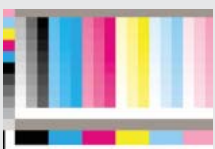
By layering ultra small (4 pl) drops within a single dot, HP Designjet 130 printers produce smoother gradations between tones for virtually grain-free images.



Automatic color calibration

The automatic closed-loop color (CLC) calibration process enables consistent and accurate color reproduction.

The CLC process is based on measuring, via a color sensor, reflected energy from primary color tiles that are illuminated with a narrow-band light source. The process works in much the same way as a classical densitometer. The printer generates a target, scans the pattern and adjusts based on the results.



Color solutions for your workflow

RGB or CMYK. Printing or proofing. Pleasing color or accurate color. With the HP Designjet 130 printing system, you can choose the solution that best fits your needs, your workflow and your environment.

HP Designjet 130 drivers

Optimized Mac and Windows drivers deliver outstanding color output for photographers or designers printing images in an RGB workflow. Support for RGB ICC profiles means you have the choice of managing color in the applications or via ICM profile or ColorSync tools.

The drivers also allow you to balance color channels individually when you need one last tweak.

EFI Designer Edition RIP for HP

The EFI Designer Edition RIP, tailored for HP printers offers a powerful, yet cost-effective digital proofing system that allows full control over digital proofing needs and saves hassle, time and money. Together, EFI and HP enable designers, photographers and other creative professional to easily generate proof quality prints with sharp detail, color accuracy and smooth tonal transitions.

Third-party RIPs

HP has worked with virtually all the leading RIP vendors in digital photography, large-format printing and pre-press proofing fields to ensure you can choose the solution that best matches your color workflow.

